



# Garden International School

Bringing Out The Best In You Since 1951

## Secondary School Profile Class of 2018

BRINGING OUT THE  
BEST IN YOU



[www.gardenschool.edu.my](http://www.gardenschool.edu.my)

# GIS at a Glance

Garden International School (GIS) is one of the world's leading international schools, renowned for its strong academic track record, focus on student wellbeing and innovative learning culture. With over 2,000 students, GIS is the largest private co-educational school in Malaysia.

Accredited by the Council of International Schools, GIS is one of the oldest and most distinguished schools in Malaysia with two locations in Kuala Lumpur: the Early Years Centre in Desa Sri Hartamas and our main campus in Mont Kiara. GIS provides British-based education for students from 3 to 18 years of age across our Early Years Centre (Nursery to Reception), Primary School (Year 1 to Year 6) and Secondary School (Year 7 to Year 13).

Our secondary school offers the National Curriculum for England and Wales, with bespoke modifications designed to meet the needs of our international student body. Our curriculum culminates in IGCSEs for our Key Stage 4 students, followed by A Levels for our Sixth Form students. Our curriculum emphasises skill development, ensuring that our students leave us well-equipped for life and able to flourish. Our rigorous curriculum is supported by over 65 years of heritage and a thriving alumni network.

As a result of our track record of academic excellence, holistic approach and skills-based education, it is not surprising that GIS students are sought after by the world's best universities.

Garden International School, BRINGING OUT THE BEST IN YOU SINCE 1951.



## University Destinations 2018

**60%**  
will attend a top  
100 university

**96%**  
will attend  
their  
1<sup>st</sup> or 2<sup>nd</sup>  
choice  
university

**85%**  
will attend  
1<sup>st</sup> choice  
university

## Academic Results 2018



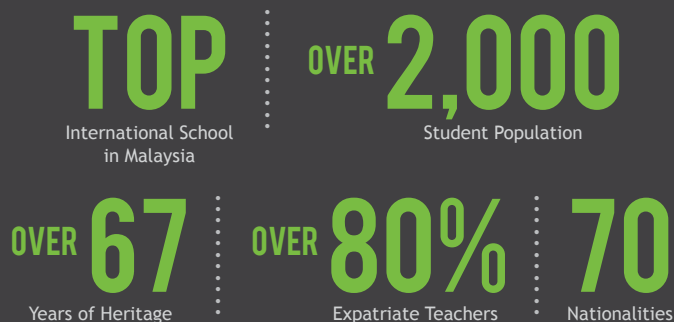
IGCSE  
A\*/A grades



A-Level  
A\*/A grades

% of total grades awarded A\*/A

Garden International School students consistently achieve some of the best academic results in the world and continue to place GIS as one of the top schools offering IGCSE and A-Level examinations.



## Academic Leadership Team

**Principal**  
Mark Ford  
[ford.m@gardenschool.edu.my](mailto:ford.m@gardenschool.edu.my)

**Head of Secondary School**  
Matt Corbett  
[corbett.m@gardenschool.edu.my](mailto:corbett.m@gardenschool.edu.my)

**Head of Sixth Form**  
Lindsay Round  
[round.l@gardenschool.edu.my](mailto:round.l@gardenschool.edu.my)

**Higher Education Guidance Counsellor**  
Dr Hayley Wood  
[wood.h@gardenschool.edu.my](mailto:wood.h@gardenschool.edu.my)

# GIS: An Enriched Curriculum

Our Wider Life provision combines a diverse and inclusive co-curricular programme with ample opportunities for outdoor education and community service.

Our secondary school offers an exceptional programme of Co-Curricular Activities (CCA). One of the largest programmes in South-East Asia, the CCA schedule includes over 150 different activities and clubs in four key areas: Global Citizenship; Creative; Community Service and Physical Performance.

The GIS Outdoor Education programme involves bespoke residential camp programmes and our annual 'Discovery Week' also sees GIS students travelling across Malaysia to take part in community-based, sustainable project work. Many GIS students further challenge themselves by undertaking the International Award (IA). All outdoor education experiences are closely mapped to our GIS Learner Skills.

GIS also offers many academic and cultural enrichment opportunities. MUN (Model United Nations) is an extremely popular CCA at GIS and the school bi-annually hosts the KLMUN (Kuala Lumpur Model United Nations). Our Music and Drama departments regularly showcase our students' talent and commitment through a range of successful concerts and productions. Our in-house instrumental music program is extremely popular and over 100 students take regular music lessons.



## GIS: Learner Skills



At GIS, we know that our graduates will need a range of transferable skills to succeed in university study and beyond. Our bespoke GIS skills ladders serve as a guide to aid the continued development of our learners; they transcend the individual areas of the curriculum and unite us in a shared belief of what young people can and should become. Our skill ladders are a tool to help teachers plan and deliver meaningful skills-based learning opportunities.

# IGCSE YEARS 10 & 11

## Academic Results 2018

We are extremely proud of our students for their exceptional IGCSE results. A spectacular 42% of all grades were A\*, which is particularly impressive considering our large cohort of over 130 Year 11 students and the inclusive nature of our school. The many successes are a result of the hard work and commitment our students have shown over the past two years, as well as the dedication of our talented teaching faculty.



### IGCSE Summary

**132**

students took IGCSE examinations in 30 subjects

**74%**

of all grades achieved were A\* or A

**42%**

of all grades achieved were A\*

**90%**

of all grades achieved were A\* to B

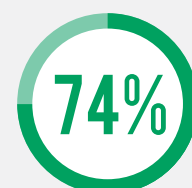
**1/3**

of the cohort achieved 10+ A\*/A grades

## 2018 IGCSE Examination Results

Subject	No. of Grades									%A*/A	%A*-B	%A*-C
	A*	A	B	C	D	E	F	G	U			
Accounting	3	3	2	2	0	0	0	0	0	60	80	100
Additional Maths	28	16	2	0	0	0	0	0	0	96	100	100
Art & Design	9	1	3	2	0	0	0	0	0	67	87	100
Art & Design: Photography	3	4	8	3	0	0	0	0	0	39	83	100
Biology	35	36	18	10	2	2	0	0	0	69	86	96
Business Studies	16	16	7	5	1	0	0	0	0	71	87	98
Chemistry	55	25	12	9	0	2	0	0	0	78	89	98
Computer Science	6	5	5	1	0	0	0	0	0	65	94	100
Coordinated Sciences	7	10	7	4	1	0	0	0	0	59	83	97
Drama	2	6	2	2	0	0	0	0	0	67	83	100
DT (Graphics)	1	3	2	3	0	0	0	0	0	44	67	100
DT (Res Mat)	2	13	8	4	2	0	0	0	0	52	79	93
Economics	24	25	8	6	1	0	0	0	0	75	88	97
English (2nd Lang)	0	2	1	2	0	0	0	0	0	40	60	100
English Language	45	42	31	9	0	0	0	0	0	69	93	100
English Literature	55	38	23	8	1	0	0	0	0	74	93	99
French	6	8	5	3	0	0	0	0	0	64	86	100
Geography	14	23	10	8	1	0	0	0	0	66	84	98
History	21	10	0	2	1	0	0	0	0	91	91	97
ICT	4	2	5	3	0	0	0	0	0	43	79	100
Malay	20	34	12	4	1	0	0	0	0	76	93	99
Mandarin (0523)	1	2	3	0	0	0	0	0	0	50	100	100
Mandarin (0547)	27	6	0	1	0	0	0	0	0	97	97	100
Maths	75	33	13	6	4	1	0	0	0	82	92	96
Music	3	7	3	3	1	0	0	0	0	59	76	94
PE	3	4	0	0	0	0	0	0	0	100	100	100
Physics	60	23	13	3	2	0	0	0	0	82	95	98
Sociology	4	11	4	4	0	0	0	0	0	65	83	100
Spanish	9	3	1	1	1	0	0	0	0	80	87	93
<b>TOTAL</b>	<b>529</b>	<b>408</b>	<b>207</b>	<b>107</b>	<b>18</b>	<b>5</b>	<b>1</b>					
<b>TOTAL %</b>	<b>41</b>	<b>25</b>	<b>18</b>	<b>10</b>	<b>3</b>	<b>2</b>	<b>0</b>			<b>69%</b>	<b>87%</b>	<b>96%</b>

### How Do Our Results Stack Up?



IGCSE  
A\*/A grades

Independent Schools Council  
(ISC): 62%  
UK Average: 20.5%

### IGCSE Results 3-Year Trend

% of All Grades Awarded	3-Year Average
A* and A (%)	72
A* to B (%)	88
A* to C (%)	97

# A Levels YEARS 12 & 13

## Academic Results 2018

Our GIS 2018 graduates built on the success of their predecessors by performing magnificently in their A Level examinations. 25% all grades awarded were A\*. An historical best figure of 83% were A\*-B.

Our Year 13 students also made significant contributions to our wider life programme, demonstrating positive leadership in many areas of school life. The extremely high calibre of university destinations and courses that our Year 13s have embarked on is truly something to celebrate.



### A-Level Summary

77

students took  
A-Level subjects

60%

of all grades achieved  
were A\* or A

83%

of all grades achieved  
were A\* to B

100%

pass rate for all students  
across all subjects

4/10

students achieved at least  
3 A\*/A grades

## 2018 A-Level Examination Results

Subject	No. of Grades							A*/A%	A*-B%
	A*	A	B	C	D	E	U		
Art & Design	1	1	3	0	0	0	0	40	100
Biology	4	11	3	4	0	0	0	68	82
Business Studies	1	4	0	1	1	0	0	71	71
Chemistry	10	9	11	2	0	0	0	59	94
Computer Science	1	3	1	2	0	0	0	57	71
DT: Graphics	0	0	1	1	1	0	0	0	33
DT: Resistant Materials	0	0	1	0	1	0	0	0	50
Economics	9	15	8	1	0	0	0	73	97
English Literature	2	6	1	1	0	0	0	80	90
Further Maths	6	5	0	0	0	0	0	100	100
Geography	1	4	1	2	1	0	0	56	67
History	1	1	1	0	0	0	0	67	100
Mathematics	17	18	14	9	1	1	0	58	82
Music	1	1	1	0	0	0	0	67	100
Physics	8	3	9	4	2	0	0	42	77
Psychology	0	3	0	2	2	0	0	43	43
Sociology	0	3	3	2	1	1	0	30	60
Spanish	0	0	1	0	0	0	0	0	100
<b>TOTAL</b>	<b>62</b>	<b>87</b>	<b>59</b>	<b>31</b>	<b>10</b>	<b>2</b>			
<b>TOTAL %</b>	<b>34</b>	<b>28</b>	<b>23</b>	<b>11</b>	<b>3</b>	<b>1</b>		<b>62%</b>	<b>85%</b>

### How Do Our Results Stack Up?



A-LEVEL  
A\*/A grades

Independent Schools Council  
(ISC): 47%  
UK Average: 23%

### A-Level Results 3-Year Trend

% of All Grades Awarded	3-Year Average
A* and A (%)	63
A* to B (%)	83
A* to C (%)	94

# GIS: The Sixth Form Advantage

In addition to completing a challenging academic curriculum, all Sixth Form students complete the GIS Diploma or GIS Diploma with Honours to extend and enrich their learning.

## The GIS Diploma

The Diploma encapsulates our holistic approach to the Sixth Form experience. The transferable skills that are developed enable our students to be fully prepared for life beyond GIS. Every year, our alumni reach out to tell us about the versatility of the transferable skills developed as part of the programme.

A GIS Diploma is awarded to students who:

- Achieve at least three good A-levels
- Complete the Extended Project or Enrichment Programme
- Complete the Community Sports Leadership Award or the Expedition Leader Award for our Gold International Award students

A GIS Diploma with Honours is awarded to students who:

- Fulfil all of the criteria above;
- Complete the GIS 'THRIVE' internship programme (a four-week professional internship, unique to GIS)



The GIS Extended Project is an opportunity for students to conduct in-depth research into an area of personal interest.

The GIS Enrichment Program is designed to stretch, challenge and nurture the individual passions of our students.

The Community Sports Leaders Award (CSLA) is a coaching qualification and enable student to learn how to lead others, increase confidence, enhance self esteem, improve communication skills.

The International Award (IA) and the Expeditions Leadership Award require students to complete challenging outdoor expeditions and demonstrate leadership as well as a longstanding commitment to service.



**THRIVE is GIS' flagship professional internship programme.**

Open to all Year 12s, the programme runs during the summer break between Year 12 and 13. The GIS THRIVE programme gives students the opportunity to undertake 4 weeks of work experience in their area of passion - usually connected to their intended undergraduate degree. From hospitals to advertising agencies, GIS students have the opportunity to develop 'real world' knowledge and skills in their chosen field. During their placement, students compile a portfolio of evidence to showcase their learning and progress, tied to the GIS Learner Skills.

## Student Leadership in the Sixth Form

GIS boasts an extensive student leadership programme. Our Year 12 students can elect to apply for a Leadership role in one of nine strands: Action, Arts, Digital, Green (Environment) House, Learning, Transitions, Sport and Wellbeing.

We host an annual in-house residential leadership conference for our student leaders, and through their leadership roles our Sixth Formers have the opportunity to upskill and empower younger student leaders to enact sustainable change in our school community.

GIS Sixth Form Student Leaders chair weekly meetings, draft annual action plans and are involved in a wide array of student-led activities, including: organising whole-school events; raising money for charity; working with teachers and parents in the school community and increasing awareness for their chosen strands.

## GIS: Adding Value

We are incredibly proud to say that the Value-Added (VA) result for our 2017/18 GIS Graduates was the best VA result in five years, with each student adding (on average) +0.34 to each of their grades across all of our qualifications. This means that, in addition to a student's aptitude for learning, the teaching and culture at GIS has improved each student's grade by over a third on average.

### Understanding Value-Added

Some schools clearly increase the achievement of its students more than others, due to the high quality of teaching and learning taking place. This advantage has come to be called Value-Added. Schools calculate this advantage by comparing what grades a child is predicted to achieve, according to standardised testing, with what a child actually achieves.

As the table below shows, our Value Added results put us ahead of all but one of the highest attaining independent schools in the UK - a superb achievement.



### Value Added Comparison to the Top 10 Highest Attaining Independent Schools in the UK

School	A-Level Value Added
St Paul's Girls' School	0.23
Westminster School	0.06
Magdalen College School	0.31
Wycombe Abbey School	0.11
St Paul's School	0.24
North London Collegiate School	-0.09
Concord College	0.15
James Allen's Girls' School	0.13
Eton College	0.17
Queen Ethelburga's College	0.57

# Where Our Students Go

## Class of 2014 - 2018 University Destinations

### AUSTRALIA & NEW ZEALAND

Australian National University  
Canterbury University, New Zealand  
Monash University Melbourne  
University of Melbourne  
University of New South Wales  
University of Queensland  
University of Sydney

### CANADA

Brock University  
McGill University  
Simon Fraser University  
The University Alberta  
University of British Columbia  
University of Guelph  
University of Toronto

### EUROPE

Basque Culinary Center (Faculty of Mondragon University, Spain)  
Erasmus University Rotterdam, Netherlands  
Essen Duisburg Germany  
HAN University of Applied Sciences, Netherlands  
Leiden University College The Hague, Netherlands  
Les Roches International School of Hotel Management, Switzerland  
NHTV Breda University  
The Institute Paul Bocuse  
Trinity College, Ireland  
Università Bocconi, Italy  
University College Cork, Ireland  
University College Dublin, Ireland  
University of Twente  
Vienna University of Economics and Business

### HONG KONG

Chinese University of Hong Kong  
Hong Kong University, Hong Kong  
Hong Kong University of Science and Technology, Hong Kong

### KOREA

Chung-ang University  
KAIST - Korea Advanced Institute of Science & Technology  
Korea University  
Seoul National University  
SungKyunKwan University  
Yonsei University

### UNITED KINGDOM

Architectural Association  
Bath Spa University  
Birmingham Conservatoire  
Bournemouth University  
Bristol University  
Brunel University  
Central Saint Martins,  
University of the Arts London  
City University  
Heriot-Watt University  
Imperial College London  
King's College, London  
Kingston University  
Lancaster University  
Loughborough University  
Manchester Metropolitan University  
Middlesex University  
Newcastle University  
Oxford Brookes University  
Portsmouth University  
Queen Mary University of London  
Queen's University, Belfast  
Royal College of Music  
Royal Holloway, University of London  
Royal Northern College of Music  
School of Oriental and African Studies,  
University of London  
Sheffield Hallam University  
St George's University London  
The Art Academy, London  
The London School of Economics and Political Science  
University College London

University for the Creative Arts, Rochester  
University of Aberdeen  
University of Bath  
University of Birmingham  
University of Brighton  
University of Bristol  
University of Cambridge  
University of Cardiff  
University of Dundee  
University of Durham  
University of East Anglia  
University of Edinburgh  
University of Essex  
University of Exeter  
University of Greenwich  
University of Hertfordshire  
University of Kent  
University of Leeds  
University of Leicester  
University of Liverpool  
University of London  
University of Manchester  
University of Newcastle  
University of Nottingham  
University of Oxford  
University of Sheffield  
University of Southampton  
University of St Andrews  
University of Surrey  
University of the Arts London  
University of Warwick  
University of Westminster  
University of York

### UNITED STATES OF AMERICA

Boston University  
Brown University  
Case Western Reserve  
Eugene Lang College - The New School for Liberal Arts, New York  
Harvard University  
Illinois Institute of Technology in Chicago

Indiana University  
Johns Hopkins University  
LIM College, New York  
New York University  
Northeastern University  
Pace University  
Purdue University  
Savannah College of Art and Design  
State University of New York at Stony Brook  
Tisch School of the Arts, NYU  
University of California, Berkeley  
University of California, Los Angeles  
University of California, San Diego  
University of Connecticut  
University of Michigan  
University of North Carolina at Chapel Hill  
University of Pennsylvania  
University of Southern California  
University of Texas at Austin  
University of Washington  
University of Wisconsin-Madison

### REST OF WORLD

International Islamic University of Malaysia  
International Medical University, Malaysia  
Manipal University, India  
National Tsing Hua University, Taiwan  
National University of Singapore, Singapore  
Newcastle University Malaysia  
University of Indonesia  
University of Johannesburg, South Africa  
University of Nottingham, Malaysia  
The One Academy, Malaysia  
Waseda University, Japan  
Yale-NUS

Visit us online at [gardenschool.edu.my](http://gardenschool.edu.my)

Book a bespoke tour via [admissions@gardenschool.edu.my](mailto:admissions@gardenschool.edu.my).

For general enquiries, email [feedback@gardenschool.edu.my](mailto:feedback@gardenschool.edu.my).

## Follow us on social media



GISMalaysia



GISMalaysia



Garden International  
School Malaysia



GISMalaysia



Garden International  
School Malaysia



Garden International  
School Malaysia



# Garden International School

Bringing Out The Best In You Since 1951

Garden International School Sdn Bhd (5211-T)

16, Jalan Kiara 3, Off Jalan Bukit Kiara, 50480 Kuala Lumpur, Malaysia.

Tel: +603-6209 6888

Fax: +603-6201 2468

Email: [admissions@gardenschool.edu.my](mailto:admissions@gardenschool.edu.my)

[www.gardenschool.edu.my](http://www.gardenschool.edu.my)

**TAYLOR'S SCHOOLS**  
UNRIVALLED. UNEQUALLED.  
A collaborative network of award-winning international schools.